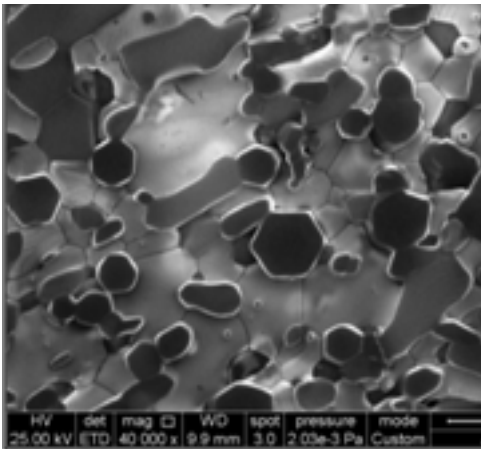


KA - EDM

Electroconductive Alumina Composite



Typical Applications

- Cutting tool inserts
- Stamping tool parts
- Wear resistant parts

Main Properties

- Extreme hardness applications
- Very good dimensional stability
- Excellent chemical resistance in the most demanding environments

Material description

- Manufactured by pressure-assisted sintering (SPS)
- High toughness electroconductive alumina based composite
- Suitable for EDM machining

Main Parameters

Parameters	Unit	KA-EDM
Density	g/cm ³	4.2
Modulus of elasticity	GPa	390
Hardness	GPa	22.5
Flexural strength	MPa	700
Fracture Toughness	MPa x m ^{1/2}	7-9
Electrical resistivity	Ω.m	3,15.10 ⁻⁵
Thermal conductivity	W/mK	35